
“PROJECT MANAGEMENT, ENGINEERING AND CONSTRUCTION MANAGEMENT” – THREE DAYS TRAINING

- OUTLINE

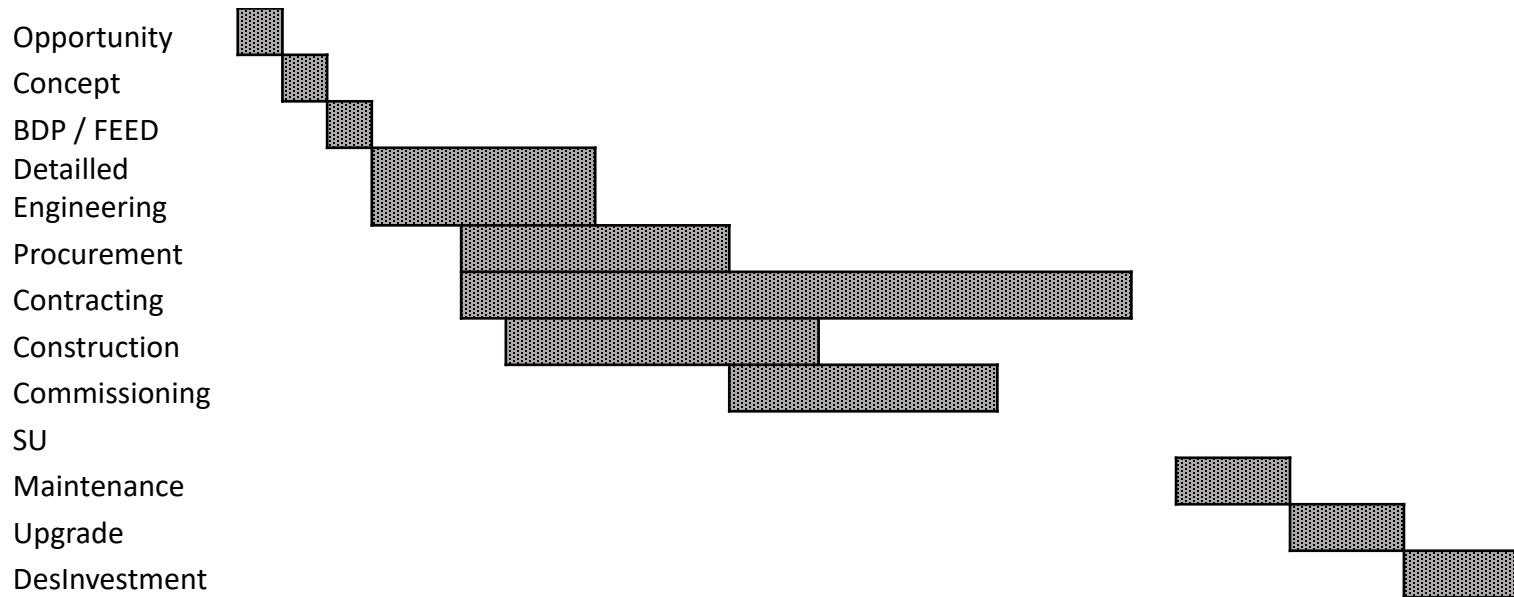
KEY STAGES OF PROJECT MANAGEMENT

Idea	vision
Opportunity	business case
SELECT Business decision	diverge / investigate as many ideas as possible (think out of the box) Go - No Go
FEED, start	diverge / investigate as many ideas as possible (think out of the box)
FEED, half way	select best opportunity
FEED, end	present basic engineering package incl. cost estimate and schedule estimate
Business decision	Go - No Go
Execution	Detail Engineering Procurement Contracting Project Control Construction Commissioning
Production	ROI
Production	Maintenance / TA
Production	Disinvestment

NUISANCE and
Too Long



KEY STAGES OF PROJECT MANAGEMENT





THANK YOU!

END OF TOPIC